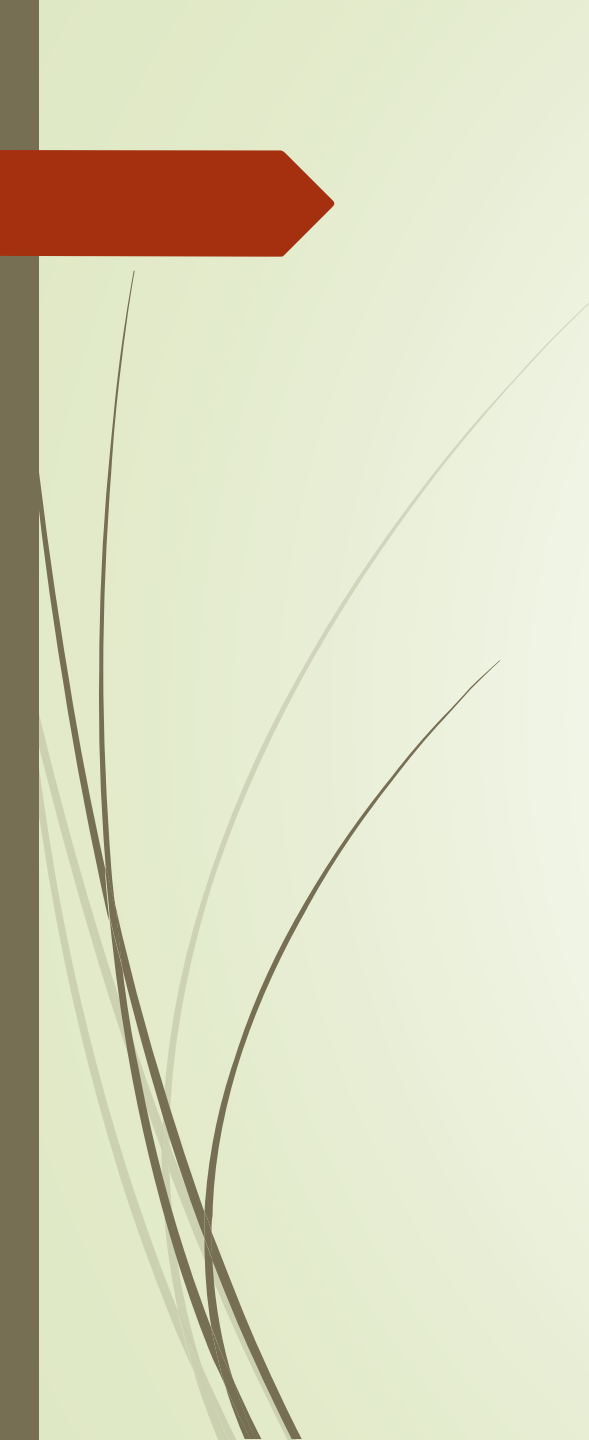




Land and Water Conservation Fund

FY 2024 Application
Workshop



This workshop does not contain all of the information and applicant responsibilities associated with the LWCF program. Applicants must adhere to all local, state, federal and programmatic requirements.



Agenda

- ▶ LWCF Overview
- ▶ State Assistance Program Overview
- ▶ Eligible Applicants & Project Types
- ▶ Funding Availability
- ▶ State Comprehensive Outdoor Recreation Plan
- ▶ Open Project Selection Process
- ▶ Application Checklist
- ▶ Break
- ▶ Criteria
- ▶ Maps
- ▶ Submission procedures

LWCF Overview

Supports increased public access to and protection for federal public lands and waters — including national parks, forests, wildlife refuges and recreation areas — and provides matching grants to state governments for the acquisition and development of public parks and other outdoor recreation sites



U.S. Department of the Interior,
National Park Service



Alabama Department of Economic
and Community Affairs





LWCF State Assistance Program

- ▶ Annual state apportionment
 - ▶ Must be obligated within three years
 - ▶ In order for the state to receive the apportioned funds
 - ▶ SCORP
 - ▶ Project approval
 - ▶ Funds obligation
- ▶ Goals
 - ▶ Public outdoor recreation resource needs
 - ▶ Increase recreation resources
 - ▶ Encourage planning and partnerships



NOTICE OF LIMITATION OF USE

This property has been acquired or developed with Federal financial assistance provided by the National Park Service of the U. S. Department of the Interior in accordance with the Land and Water Conservation Fund Act of 1965, as amended, 54 U.S.C. 200301-200310. Pursuant to a requirement of that law, this property may not be converted to other than public outdoor recreation uses (whether by transfer, sale, or in any other manner) without the express written approval of the Secretary of the Interior. By law, the Secretary shall approve such conversion only if he finds it to be in accord with the then existing Comprehensive Statewide Outdoor Recreation Plan and only upon such conditions as he deems necessary to assure the substitution of other recreation properties of at least equal fair market value and reasonably equivalent usefulness and location.



Eligible Applicants

- Municipalities
 - County commissions
 - State agencies
 - Legally constituted recreation boards, authorities, and commissions
 - State authorities created by the Legislature
 - Recognized Indian tribes
- 

Examples of Eligible Activities

- Acquisition of park land
- Development of park land
 - Playgrounds
 - Ball Fields
 - Trails
 - Picnic Facilities
 - Splash Pads
 - Camping Areas
 - Support Facilities
 - Pavilions
- Combination Acquisition and Development





Examples of Ineligible Activities

- Costs incidental to an acquisition
- Kitchen, office and sports equipment
- Many sheltered and indoor facilities
- Historic sites, structures, and museums
- Areas used primarily for semi-professional and professional sports and athletics
- Development of prime or unique farmland



Matching Requirement

- ▶ LWCF provides up to 50 percent of the total project costs, not to exceed the grant ceiling of \$500,000.
- ▶ The sponsor must provide match in the form of cash and/or in-kind match.
- ▶ Project costs exceeding the grant amount and required match must be paid by the project sponsor.
- ▶ LWCF grant funds are distributed on a cost reimbursement basis.



Funding Availability

Appropriation by year

FY 2023 – \$4.3 million

FY 2024 (anticipated) – \$4.3 million

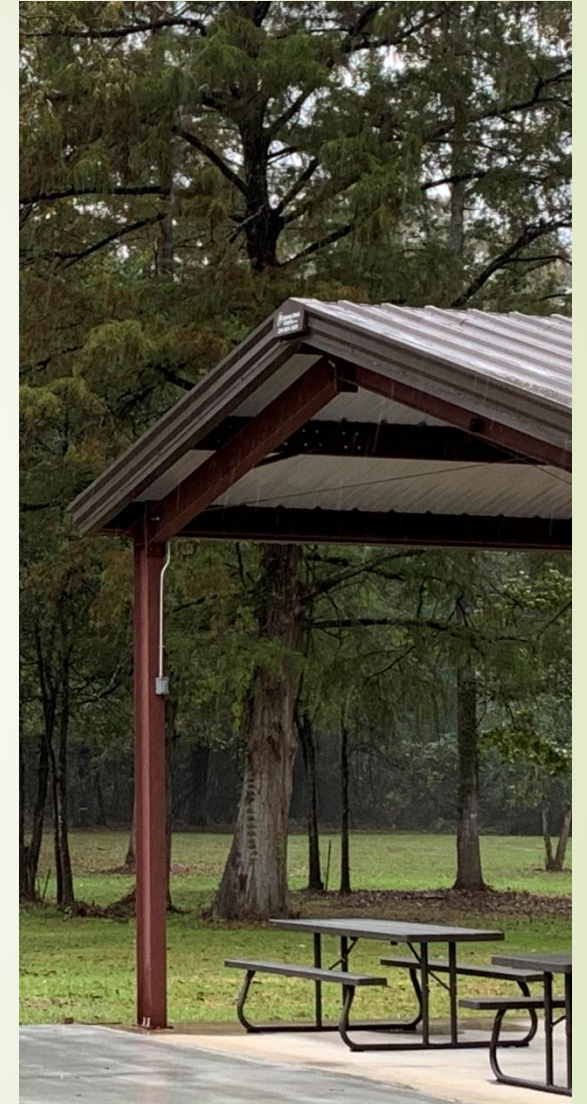
\$8.6 million



Funding Limitations

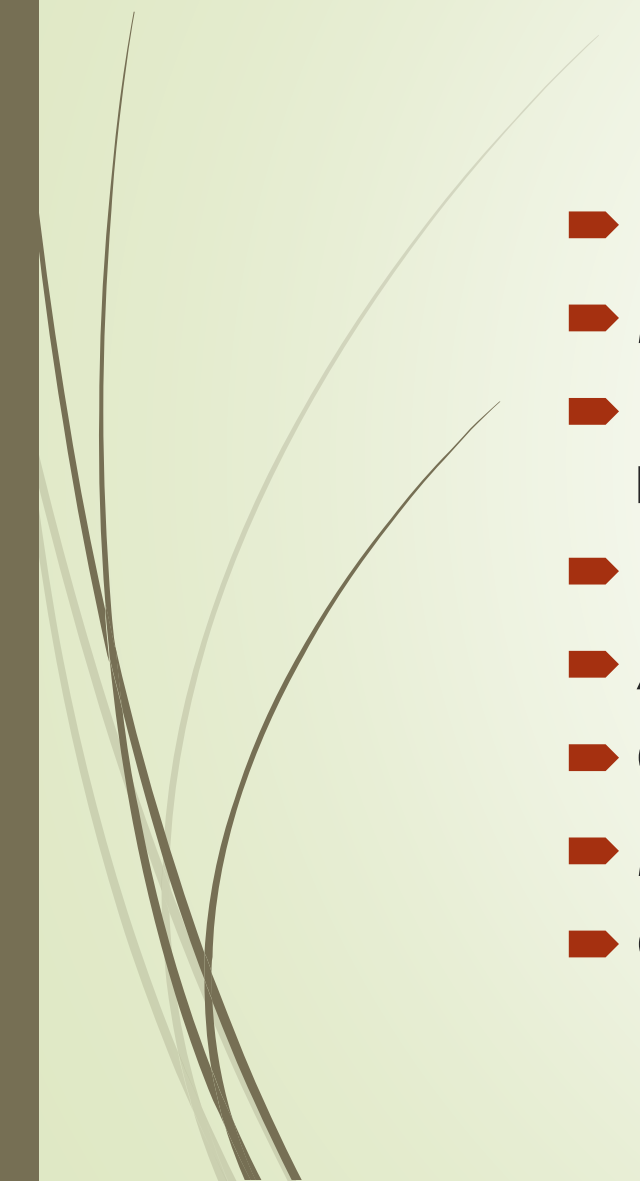
- ▶ Maximum Grant Amount - \$500,000
- ▶ Minimum Grant Amount - \$50,000.00*

*This applies to development projects on property that is not currently protected by the LWCF Act.



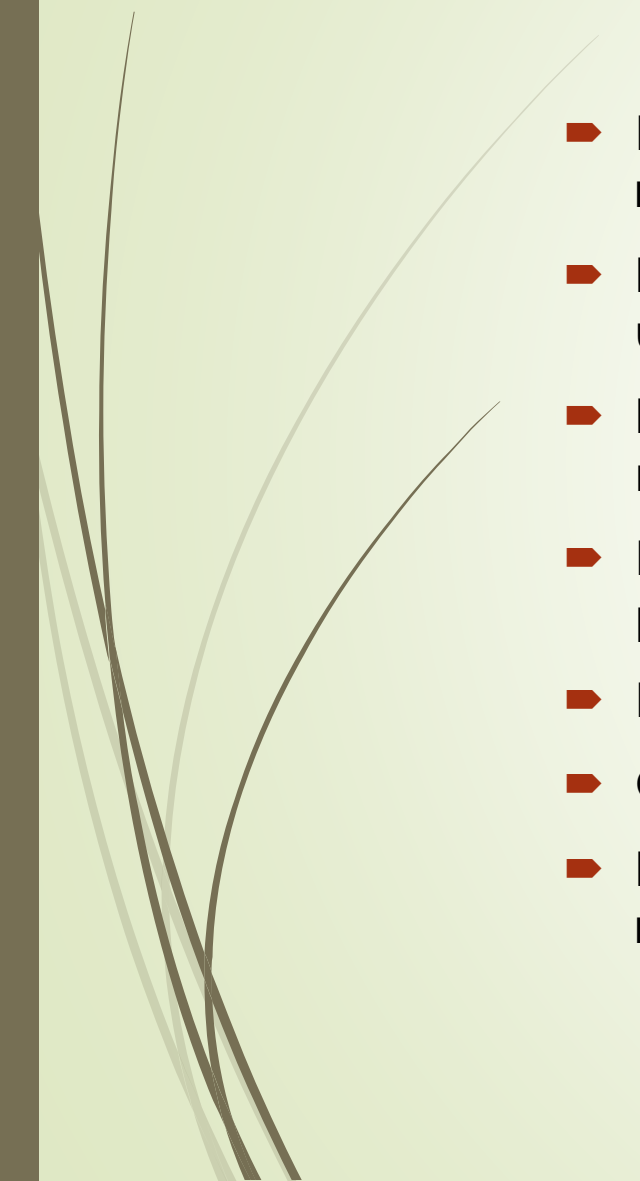


State Comprehensive Outdoor Recreation Plan (SCORP)

- Required for LWCF assistance eligibility
 - Must be updated at least once every five years
 - Evaluates supply and demand of recreation resources
 - Identifies capital investment priorities
 - Assures public participation in planning
 - Coordinates outdoor recreation programs
 - May include a trails plan
 - Guides selection of projects for LWCF assistance
- 

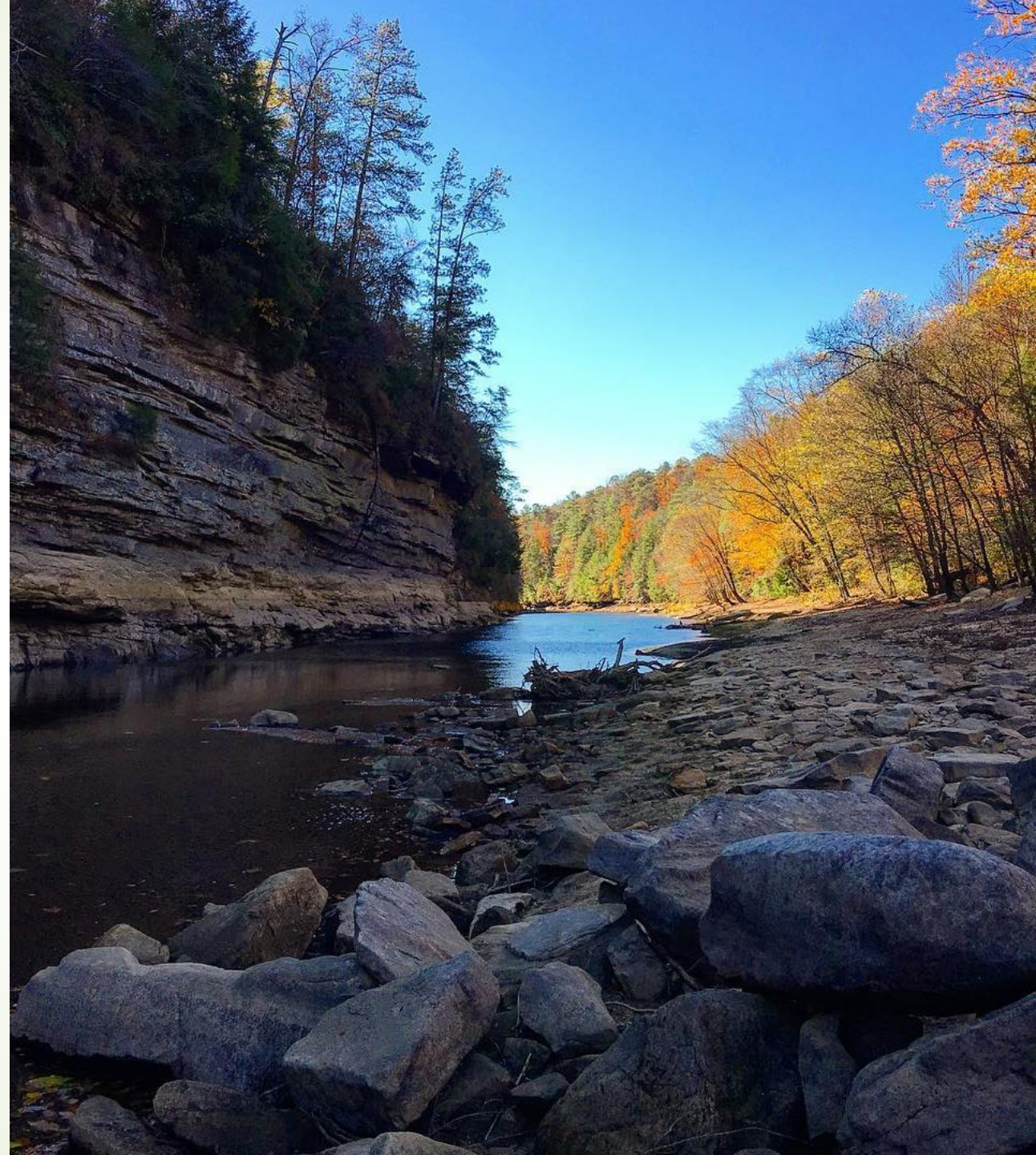


SCORP Goals

- ▶ Promote the conservation and stewardship of natural and cultural resources
 - ▶ Increase physical accessibility to outdoor recreation facilities through universal design
 - ▶ Increase and sustain funding resources for outdoor recreation facility maintenance and development, particularly for underserved communities
 - ▶ Enhance diversity, equity, and inclusion of outdoor recreation facilities and programs
 - ▶ Enhance public awareness of and engagement in outdoor recreation
 - ▶ Connect outdoor recreation assets and communities
 - ▶ Improve the effectiveness of partnerships to develop and maintain outdoor recreation facilities
- 




Open Project Selection Process (OPSP)





OPSP

- Objective criteria/standards for grant selection
 - Based on priority needs for acquisition/development of outdoor resources
 - Connection between the SCORP and the use of LWCF grants
- 



OPSP Objectives

- 1.1:** Incorporate the design, construction and operation of recreation infrastructure that protect sensitive cultural and/or natural resources
- 1.2:** Acquire and permanently protect priority cultural and/or natural resources, including priority wetlands in Alabama
- 2.1:** Achieve universal accessibility or that achieve the highest level of accessibility practicable for that given program or site
- 3.1:** Incorporate upgrading/improving existing facilities
- 3.2:** Provide services to underserved cities, counties, or with regions documented health and/or economic disparities
- 4.1:** Have been planned through a process that has specifically solicited engagement of and received input from minority populations
- 6.1:** Incorporate safe multi-modal physical connections within and between communities and across regions and/or that involve thematic or programmatic connections that heighten awareness of regional assets
- 7.1:** Incorporate partnerships among multiple organizations and jurisdictions that achieve higher-impact outdoor recreation projects that positively impact multiple communities and/or counties



Each Application Must Include:

- ▶ Grant Application Checklist
- ▶ Cover letter on official letterhead signed by the chief elected official
- ▶ Application Cover Sheet
- ▶ Resolution adopted by the legal entity of the applicant authorizing the application and committing all matching funds required to complete the proposed project
- ▶ Completed and signed Project Narrative Form to include responses to the application rating criterion*
- ▶ Project Cost Estimate
- ▶ Detailed project budget with narrative
- ▶ Risk Assessment



Each Application Must Include: (cont)

- ▶ LWCF Bidding and Contracting Compliance Questionnaire
- ▶ Verification of SAM.gov Registration
- ▶ Location Map*
- ▶ Preliminary Site Plan*
- ▶ LWCF Property Boundary Map*
- ▶ Building Floor Plans (if applicable)
- ▶ Schedule of project activities
- ▶ Proof of ownership or other control or tenure



Each Application Must Include: (cont)

- ▶ Leases, MOA's, MOU's, etc.
- ▶ Use schedule (school parks)
- ▶ NPS Form 10-904 Application & Revision (A&R) Form
- ▶ Standard Form 424, Application for Federal Assistance
- ▶ Standard Form 424C, Budget Information for Construction Programs
- ▶ Standard Form 424D, Assurances for Construction Programs
- ▶ Standard Form - Project Abstract Summary
- ▶ NPS Form 10-903 Description and Notification Form (DNF)



Each Application Must Include: (cont)

- ▶ Federal, State, local, etc. concurrence letters (National Environmental Policy Act, Section 106 of the National Historic Preservation Act of 1966, etc.)
- ▶ Floodplain/Wetland Map Overlays
- ▶ Proof of flood insurance (if applicable)
- ▶ Recreation Area Inventory Form
- ▶ Letters of endorsement, support, and commitment; other documentation of citizen participation

Rating Criteria

- Eligible sponsor
- Adequate citizen participation
- Eligible activities
- Adequate control and tenure
- Property boundary map
- Signed authorizing resolution
- Program thresholds
- Unique farmlands



Program Criteria

- Operation and maintenance of existing parks
- Project feasibility
- Meeting regional needs
 - Barriers to participation
 - Unmet demand
 - Level of service gaps
- Citizen participation
- Underserved populations



Incentive Criteria

- Donation or discount sale of land
- Recreation facility inventory
- Historical, archaeological, cultural
- Protects natural and cultural resources
- Connectivity
- Passive or family-oriented
- Joint effort
- No previous LWCF
- Renovation or replacement of aged facilities
- Inclusivity and accessibility
- Leveraging
- Health disparities



Location Map

- Location of site
- Identification of the property boundary
- Public access points
- Street/road names
- Sufficient detail for state and/or federal agencies to find the site



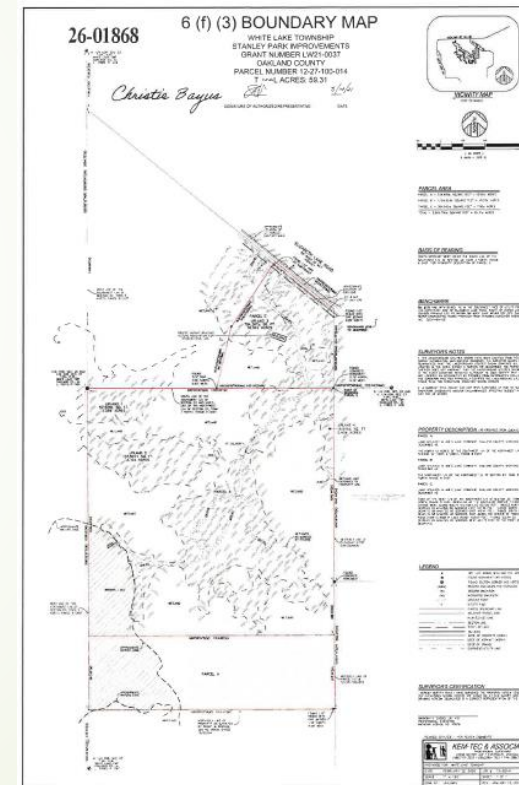
Preliminary Site Plan

- Location and size of proposed facilities
- Location and size of existing facilities
- Any known future development
- Existing powerlines/other utilities
- Easements or rights-of-way
- Floodplain (if applicable)
- Site acreage
- Title block
- North arrow
- Legend
- Public access points
- Signature of chief elected official and date signed



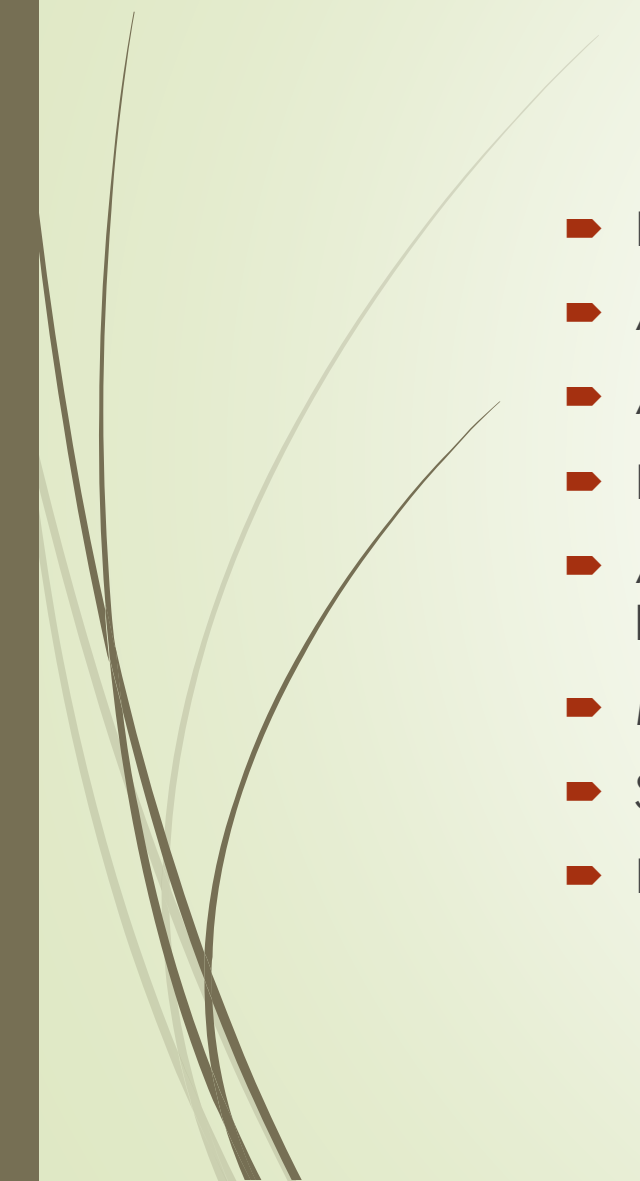
LWCF Boundary Map

- Detail to legally identify the land*
- Know outstanding rights and interests held by others
- Acreage
- North arrow
- Signature of the chief elected official and date signed
- Latitude and longitude
- Public access points





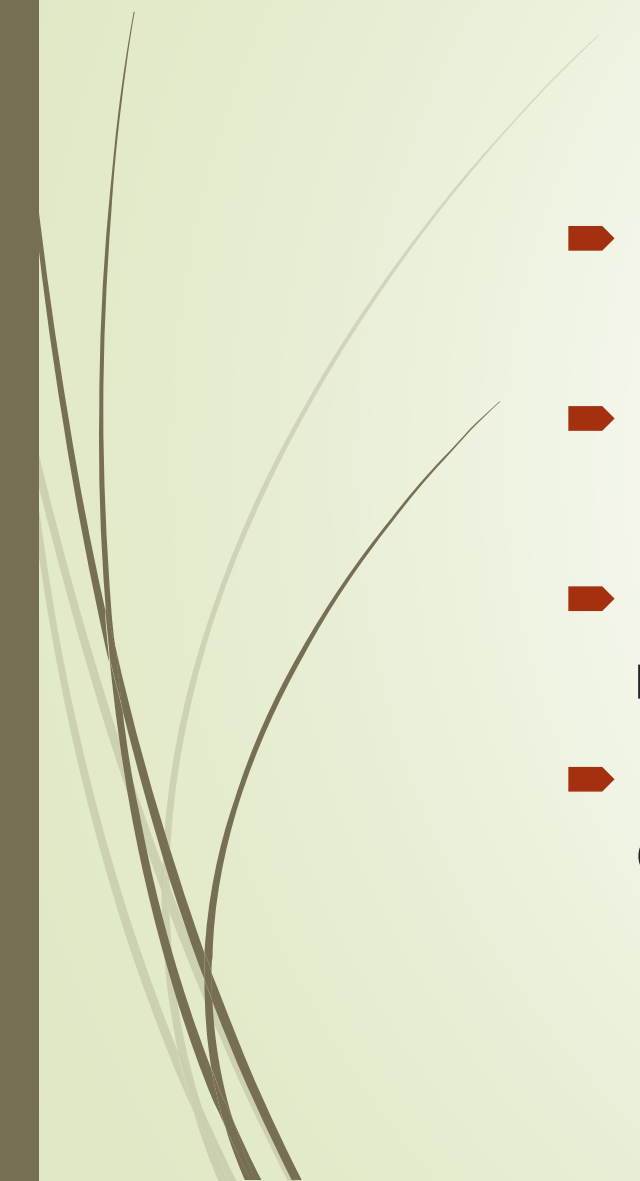
Boundary Map Specifications

- 
- Deed references
 - Adjoining ownerships
 - Adjoining easements and rights-of-way
 - Public streets
 - Adjoining water bodies or other natural landmarks
 - Metes and bounds
 - Surveys
 - Preferred size 11"x17"



Thresholds

An entity may not apply:

- If it has an open LWCF or Recreational Trails Program (RTP) grant as of November 15, 2023
 - If it has unresolved compliance issues from a previous LWCF or RTP grant
 - If it did not respond in writing to a LWCF or RTP inspection report that contained deficiencies (within 5 years)
 - If it has not completed and adhered to an approved Corrective Action Plan for previous compliance issues
- 



Anticipated Timeline



Application Workshop:	August 30, 2023
Applications Due:	November 15, 2023
Application Rating and Review:	November 2023-January 2024
Site Visits:	February 2024
Submissions Forwarded to NPS:	March 2024
Notification of Funding:	June/July 2024

Submission Instructions

One copy of the full application must be submitted by one of the methods below.

► By Mail:

Alabama Department of Economic and Community Affairs
Attn: Nora Powell Mays, Programs Specialist
Post Office Box 5690
Montgomery, Alabama 36103-5690


► By Courier:

Alabama Department of Economic and Community Affairs
Attn: Nora Powell Mays, Programs Specialist
401 Adams Avenue, Suite 410
Montgomery, Alabama 36104

► By E-Mail:

nora.mays@adeca.alabama.gov and latoya.edwards@adeca.alabama.gov

DEADLINE: 12 Noon, Wednesday, November 15, 2023



Regardless of the submission method chosen, the application must be received by the Federal Initiatives and Recreation Division by 12 Noon, Wednesday, November 15, 2023. Applications received on November 15, 2023, will be timestamped upon receipt.



All forms and information available at
www.adeca.alabama.gov

- Divisions
- Federal Initiatives and Recreation
- Land and Water Conservation Fund
- LWCF Information and Application Documents



Federal Initiatives and Recreation (FIR) Land and Water Conservation Fund

Crystal G. Talley

FIR Division Chief

crystal.talley@adeca.alabama.gov

(334) 353-2630

LaToya Edwards

Programs Manager

latoya.edwards@adeca.alabama.gov

(334) 242-5382

Nora Powell Mays

Programs Specialist

nora.mays@adeca.alabama.gov

(334) 242-5612



Questions and Answers

For more information, please contact:

Nora Powell Mays

Programs Specialist

(334) 242-5612

nora.mays@adeca.alabama.gov

- OR -

LaToya Edwards

Programs Manager

(334) 242-5382

latoya.edwards@adeca.alabama.gov

