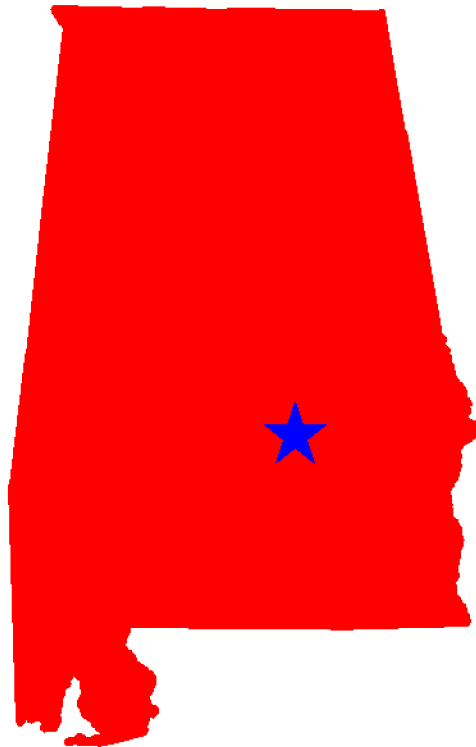




## Traffic Safety Facts Alabama 2005-2009



This Report Contains Data From the Following Sources:

- Fatality Data - NCSA Fatality Analysis Reporting System (FARS): 2005-2008 Final File and 2009 Annual Report File (ARF)
- Observed Safety Belt Data - NCSA National Occupant Protection Use Survey (NOPUS) and the Alabama State Survey
- Vehicle Miles of Travel Data and Motorcycle Registrations - Federal Highway Administration (FHWA)
- Population Data - U.S. Bureau of the Census



**Fatalities By The Highest Blood Alcohol Concentration (BAC) in the Crash\*\*:**  
**Alabama , U.S. and Best State**  
**(Old Definition)**

Year		Total Fatalities in all Crashes	Highest BAC level in the Crash					
			BAC = .01+			BAC = .08+		
			Number	Percent	Per 100 Million VMT	Number	Percent	Per 100 Million VMT
2005	Alabama	1,148	445	39	0.75	394	34	0.66
	US	43,510	17,590	40	0.59	15,102	35	0.51
	Best State*			14	0.16		12	0.14
2006	Alabama	1,207	477	40	0.79	409	34	0.67
	US	42,708	17,738	42	0.59	15,144	35	0.50
	Best State*			24	0.26		20	0.22
2007	Alabama	1,110	466	42	0.76	400	36	0.65
	US	41,259	17,158	42	0.57	14,603	35	0.48
	Best State*			24	0.27		21	0.23
2008	Alabama	969	399	41	0.67	344	36	0.58
	US	37,423	15,449	41	0.52	13,258	35	0.45
	Best State*			21	0.21		16	0.16
2009	Alabama	848	351	41	0.63	306	36	0.55
	US	33,808	14,188	42	0.48	12,233	36	0.41
	Best State*			23	0.22		18	0.16

\*State (or States) With Lowest Percents: Lowest Percents Could Be in Different States

\*\*Based on the BAC of All Involved Drivers, Motorcycle Riders (Operators), Pedalcyclists and Pedestrians

[Back To The Table of Contents](#)



Alcohol-Impaired Driving Fatalities\*\*:  
Alabama , U.S. and Best State  
(New Definition)

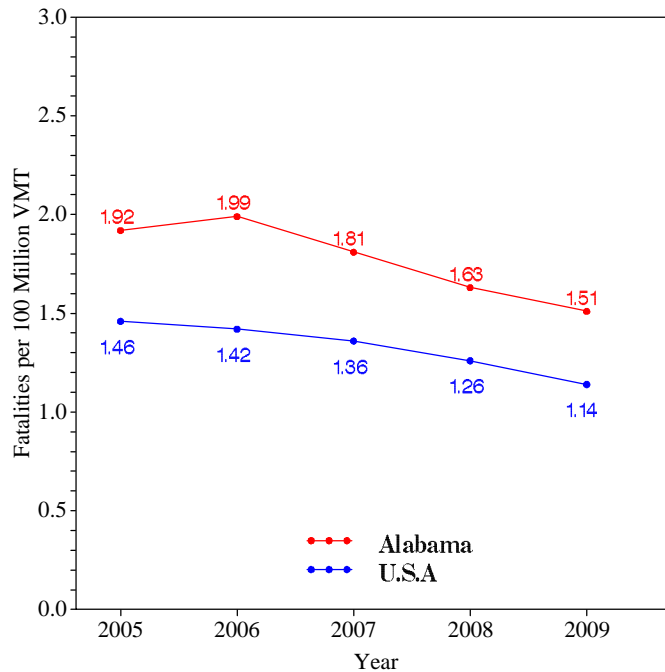
Year		Total Fatalities in all Crashes	Alcohol-Impaired Driving Fatalities (BAC = .08+)		
			Number	Percent	Per 100 Million VMT
2005	Alabama	1,148	373	32	0.63
	US	43,510	13,582	31	0.45
	Best State*			12	0.13
2006	Alabama	1,207	377	31	0.62
	US	42,708	13,491	32	0.45
	Best State*			18	0.20
2007	Alabama	1,110	377	34	0.61
	US	41,259	13,041	32	0.43
	Best State*			19	0.21
2008	Alabama	969	314	32	0.53
	US	37,423	11,711	31	0.39
	Best State*			16	0.16
2009	Alabama	848	280	33	0.50
	US	33,808	10,839	32	0.37
	Best State*			16	0.15

\*State (or States) With Lowest Percents: Lowest Percents Could Be in Different States  
\*\*Based on the BAC of All Involved Drivers and Motorcycle Riders (Operators) Only

[Back To The Table of Contents](#)

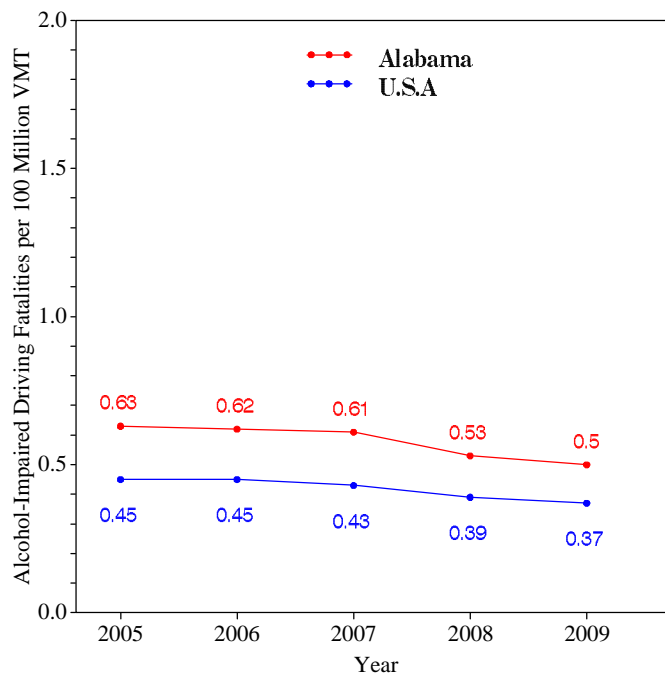


### Fatalities per 100 Million VMT



[Back To The Table of Contents](#)

### Alcohol-Impaired Driving Fatalities per 100 Million VMT



[Back To The Table of Contents](#)



**Blood Alcohol Concentration (BAC) Reporting Rates  
For Drivers/Motorcycle Riders (Operators)  
Involved in Fatal Crashes:  
Alabama , U.S. and Best State**

Year		Surviving Drivers/Motorcycle Riders			Killed Drivers/Motorcycle Riders			Total Drivers/Motorcycle Riders		
		Total	With Blood Alcohol Concentration (BAC) Results Reported to FARS		Total	With Blood Alcohol Concentration (BAC) Results Reported to FARS		Total	With Blood Alcohol Concentration (BAC) Results Reported to FARS	
			Number	Percent		Number	Percent		Number	Percent
2005	Alabama	758	118	16	795	442	56	1,553	560	36
	US	31,729	7,415	23	27,491	18,773	68	59,220	26,188	44
	Best State*			77			98			84
2006	Alabama	742	114	15	841	344	41	1,583	458	29
	US	30,498	7,482	25	27,348	18,911	69	57,846	26,393	46
	Best State*			81			99			85
2007	Alabama	695	89	13	775	460	59	1,470	549	37
	US	29,449	7,631	26	26,570	19,434	73	56,019	27,065	48
	Best State*			82			100			84
2008	Alabama	587	86	15	702	449	64	1,289	535	42
	US	26,162	7,656	29	24,254	18,415	76	50,416	26,071	52
	Best State*			81			99			85
2009	Alabama	527	74	14	610	346	57	1,137	420	37
	US	23,432	6,372	27	21,798	15,505	71	45,230	21,877	48
	Best State*			86			97			90

\*State (or States) With Highest Percents: Highest Percents Could Be in Different States

[Back To The Table of Contents](#)